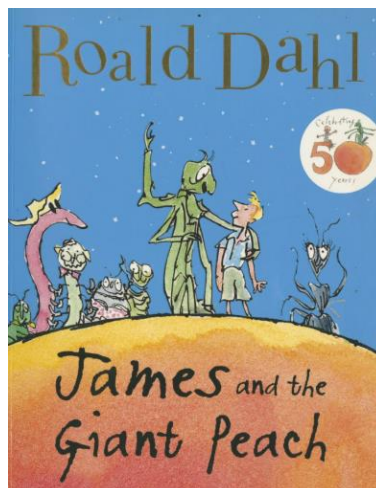


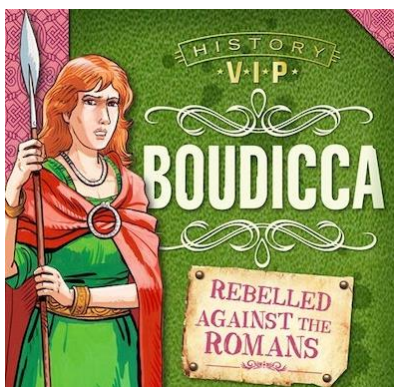


Year 4  
Spring 1  
2024-2025

## James and the Giant Peach



## Boudicca



## Sewing



## Glossary

Below are the key words your child will be using in their classwork this half term.

Please help your child to complete the glossary and be able to use and spell the words. Feel free to add any additional topic related vocabulary that you think of.

Word	Definition
Cross stitch	
Applique	
Rebellion	
Measure	
Thermometer	
Fault lines	
Plate tectonics	
Tsunami	

**Over the next half term, your child will be working on:**

- French- Vegetables
- Maths - Multiplication and Division
- English - James and the Giant Peach
- PE - Gymnastics and fitness
- DT- sewing
- History - Boudicca
- Geography - Earthquakes and volcanoes
- Science- States of matter and sound
- R.E- Jesus

**Your child needs your help and involvement!**

**Please get involved by:**

- Discussing the new vocabulary with your child.
- Regularly practising all of the times tables.
- Encouraging your child to do some reading for at least 10 minutes every day, independently or to an adult.

### **Routines**

- We will be having our P.E. sessions every Wednesday & Thursday. Please make sure your child has their PE kit in school every day as these days can change. Ensure your child is not wearing earrings or has plasters/can remove them themselves.
- New reading books will be sent home when you have signed the reading diary to say that they have finished the book.
- Spelling tests will take place every Friday. Your child will bring their next spelling list home on a Friday.
- Times table tests will be on a Friday. Please ensure your child has practiced on TT Rock Stars.

## Homework

Homework will be set weekly in learning logs. Each Friday your child will bring home their learning log, which will have some options to choose from. Your child will then need to fill in two pages about the chosen subject. Please see some nice examples on the class page. If you are struggling, please speak to me and remember we are offering homework club daily after school that your child can attend.

<b>Spellings</b>	<b>Tested every Friday</b>
<b>Times Tables</b>	<b>Tested every Friday</b>

**PLEASE READ AT HOME AT LEAST 3 TIMES A WEEK**

## Dates for the Diary

School reopens	06/01/25
Class assembly	05/02/25
Parent's evening	06/02/25
School Closes	14/02/25
School Reopens	24/02/25